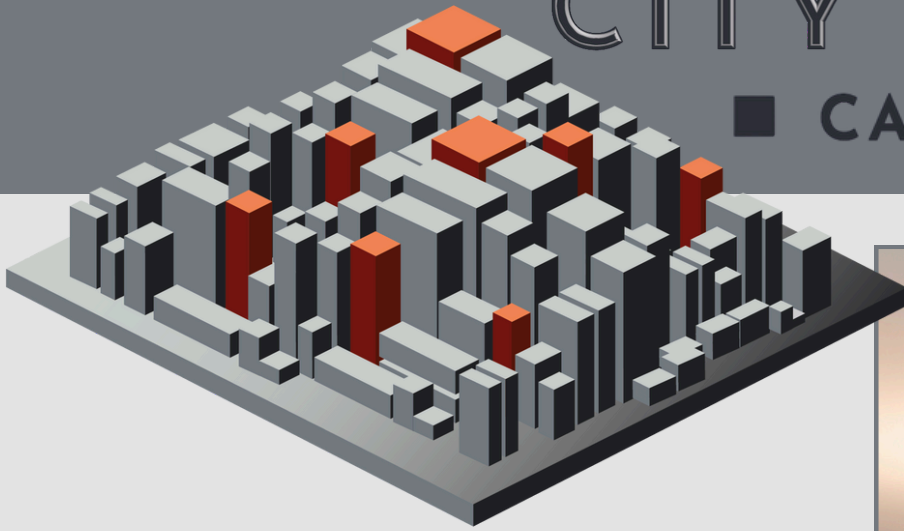
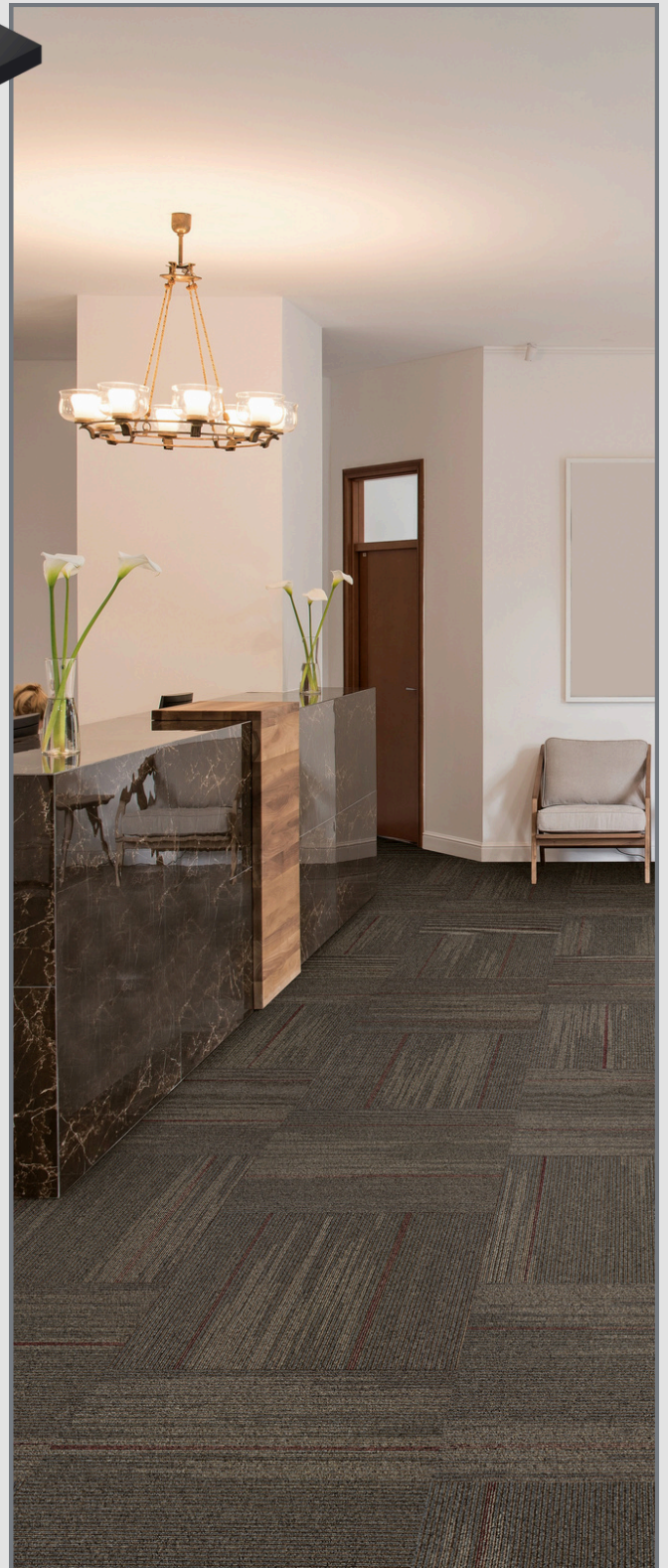


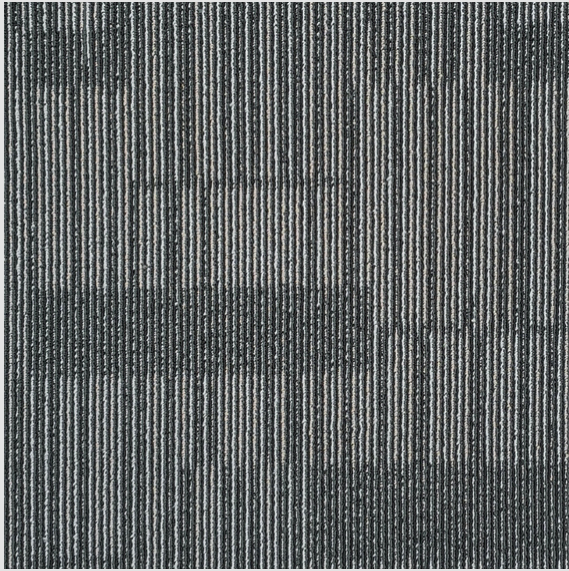
CITY SQUARES

■ CARPET TILE ■

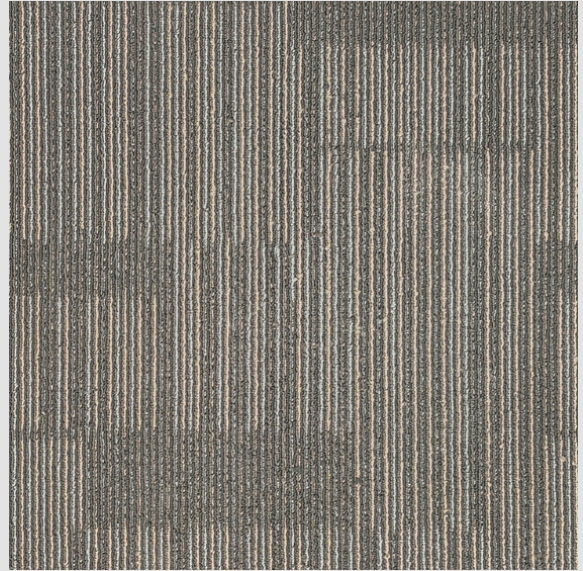


20" x 20"
Carpet Tile with
Ultra-Flex Backing





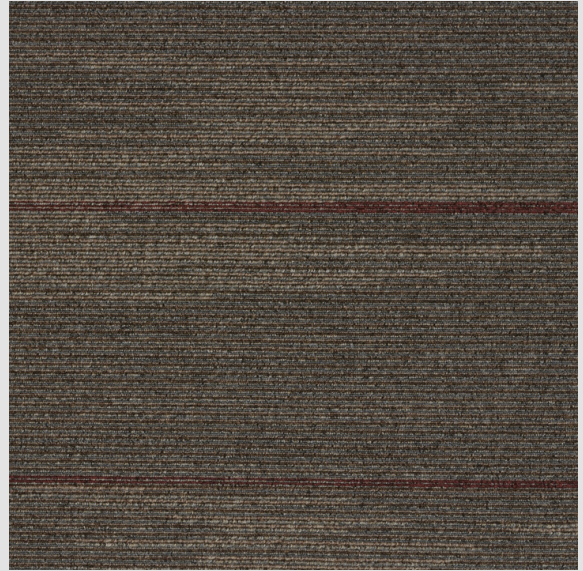
7971 Portland



7608 Madison



7720 Denver



7518 Albany



7785 Topeka



7737 Austin

7971 Portland



7608 Madison



7720 Denver



7518 Albany



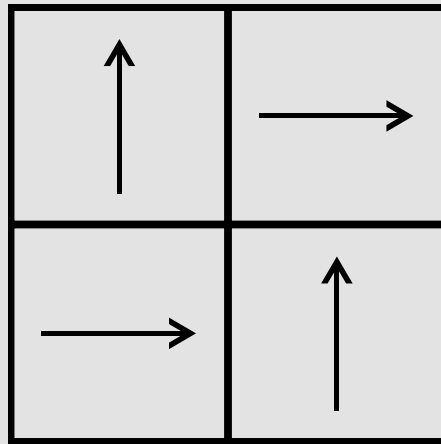
7758 Topeka



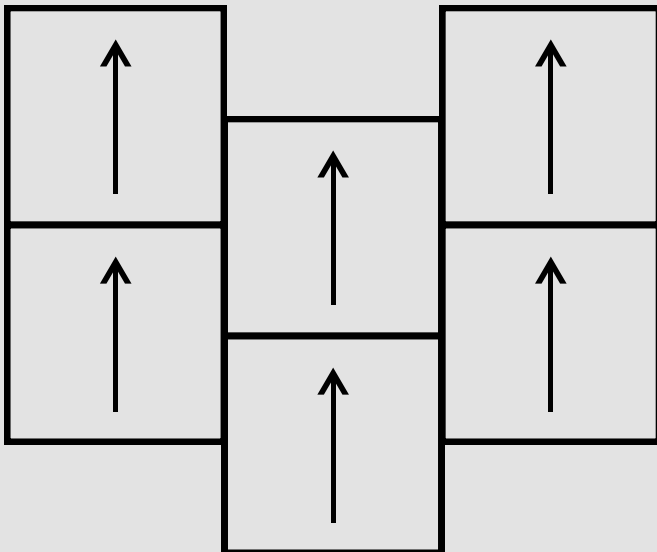
7737 Austin



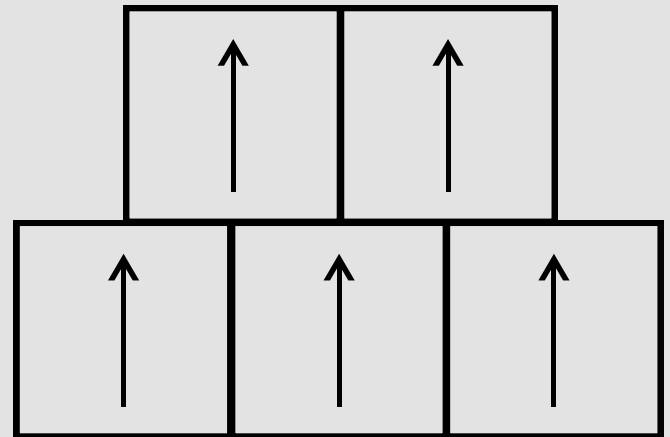
Different Install Styles



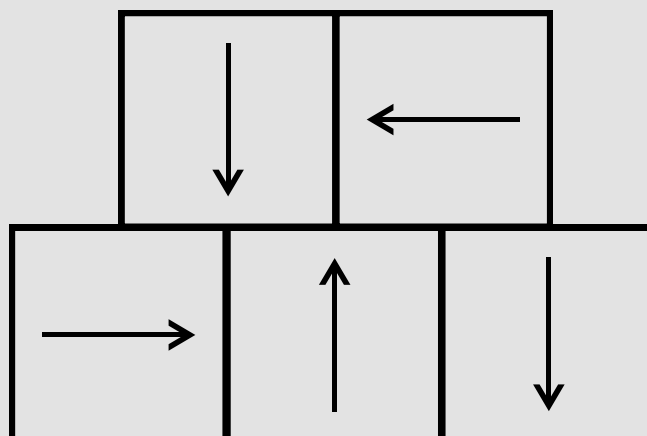
QUARTER TURN



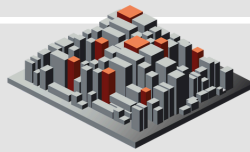
ASHLAR



BRICK



RANDOM



CITY SQUARES

■ CARPET TILE ■

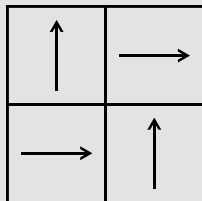
PRODUCT SPECIFICATIONS

STYLE NAME	City Squares
PRODUCT TYPE	Carpet Tile
CONSTRUCTION	Multi-Level Pattern Loop
FIBER	PP
DYE METHOD	Solution Dyed
PRIMARY BACKING	Synthetic
SECONDARY BACKING	Ultra-Flex Backing
PRODUCT SIZE	20" X 20"
SY PER CARTON	6.57 sy
PIECES PER CARTON	22
GAUGE	1/12
STITCHES	12/in
AVERAGE DENSITY	4900
TOTAL THICKNESS	0.239in
OVERALL WEIGHT	120 oz./sy
WARRANTY	15 Year Commercial Limited Warranty with Stain and Color

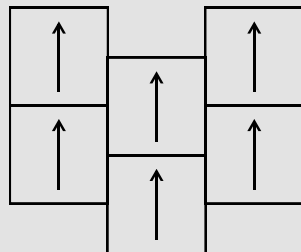
PERFORMANCE TESTING

PILL TEST	Pass
RADIANT PANEL	Class 1 / ASTM E648
NBS SMOKE	Less than 450 / ASTM E662
ELECTROSTATIC PROPENSITY	Less than 3.5 kv / AATCC - 134
CRI® GREENLABEL PLUS	GLP8233
ADA COMPLIANCE	>0.6, meets the recommended static coefficient of friction for ADA walking surfaces and accessible routes

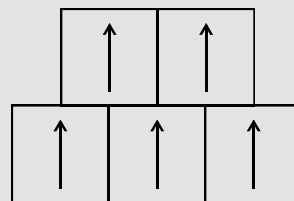
RECOMMENDED INSTALLATION METHODS



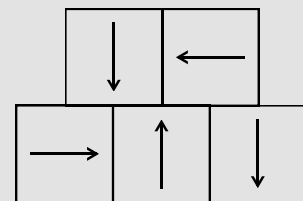
QUARTER
TURN



ASHLAR



BRICK



RANDOM

